

PAGE 3:17

**CRT SOCKETS, TUNERS,
 TUNING TRACKS and VR BLOCKS.**

MIT, NAT, SONY, SHARP, SANYO CRT SOCKET

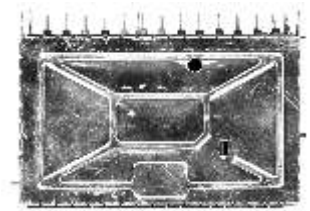
11 PIN WITH FOCUS
 PIN CIRCLE DIAMETER = 15mm
 LENGTH = 57mm



CODE: TV-CRT 130
TRADE: \$ 6.00 each
RETAIL: \$ 8.95 each

PHILIPS TUNER

ORIGINAL#: ELC2060
CODE: TV-TUNER 95
TRADE: \$ 22.00
RETAIL: \$ 33.00



IN-LINE GUN CRT SOCKET

12 PIN 110 DEG
 PIN CIRCLE DIAMETER = 15mm
 LENGTH = 31mm



CODE: TV-CRT 300
TRADE: \$ 6.00 each
RETAIL: \$ 8.95 each

75ohm JOINER

PAL SKT TO RCA PLUG
 AS USED IN TUNERS



CODE: GC PSC343
TRADE: \$ 0.77
RETAIL: \$ 5.95

PHILIPS, KRIESLER CRT SOCKET

12 PIN 90 DEG - DELTA C/UIT
 PIN CIRCLE DIAMETER = 21mm
 LENGTH = 35mm



CODE: TV-CRT 200
TRADE: \$ 6.00 each
RETAIL: \$ 8.95 each

PHILIPS / KRIESLER TUNER TRACKS

TYPE: 3 WAY
CODE: TV-TTT3
TRADE: \$ 3.30 each
RETAIL: \$ 5.95 each



PHILIPS / KRIESLER TUNER TRACKS

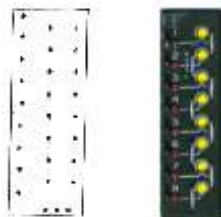
TYPE: 4 WAY
CODE: TV-TTT4
TRADE: \$ 3.30 each
RETAIL: \$ 5.95 each



VR TUNING BLOCK

DESCRIPTION: 8WAY - 20K 28PINS
 VERTICAL MOUNT

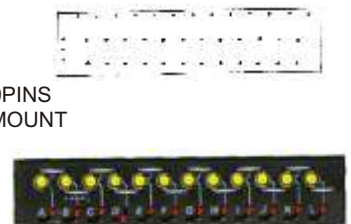
CODE: TV-VRB 10
TRADE: \$ 4.95 each
RETAIL: \$ 7.95 each



VR TUNING BLOCK

DESCRIPTION: 12WAY - 20K 40PINS
 HORIZONTAL MOUNT

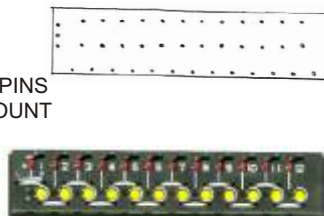
CODE: TV-VRB 16
TRADE: \$ 4.95 each
RETAIL: \$ 7.95 each



VR TUNING BLOCK

DESCRIPTION: 12WAY - 100K 40PINS
 HORIZONTAL MOUNT

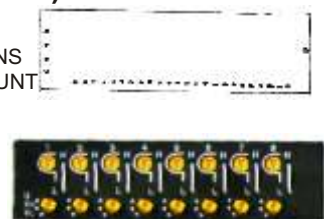
CODE: TV-VRB 23
TRADE: \$ 4.95 each
RETAIL: \$ 7.95 each



VR TUNING BLOCK (SONY)

DESCRIPTION: 8WAY - 100K 29PINS
 HORIZONTAL MOUNT

CODE: TV-VRB 20
TRADE: \$ 4.95 each
RETAIL: \$ 7.95 each



VR TUNING BLOCK

DESCRIPTION: 12WAY - 100K 29PINS
 HORIZONTAL MOUNT

CODE: TV-VRB 30
TRADE: \$ 4.95 each
RETAIL: \$ 7.95 each

